



Khmer  
Geographic  
Institute

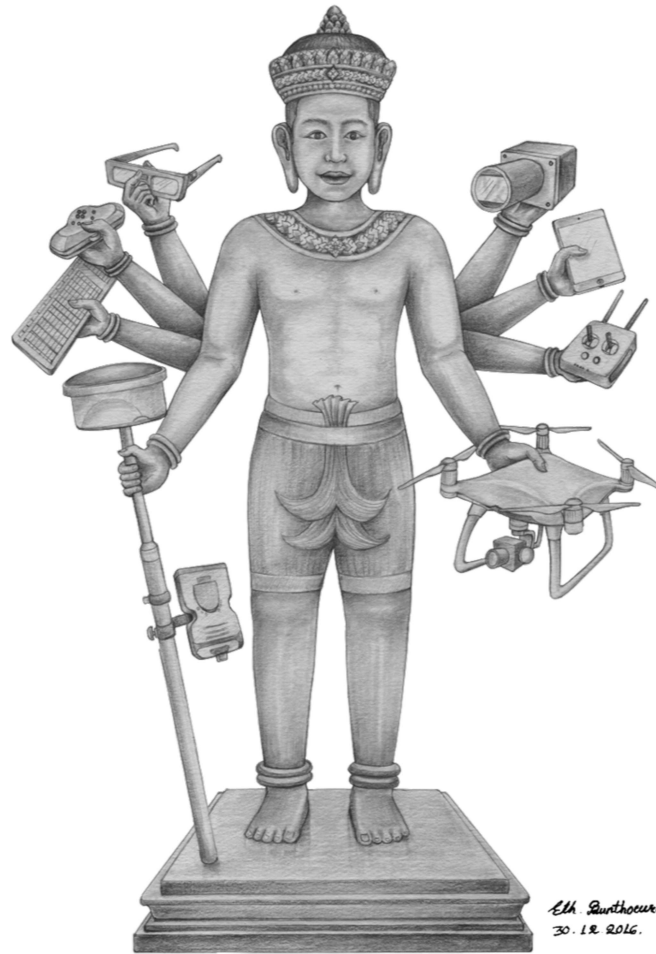


## Seeing in 3D



Brahma god of creation and knowledge

## Measuring the world



Vishwakarma the Celestial Surveyor



## Professional Team

Khmer Geographic Institute (KGI) is a company specializing in Photogrammetry and Lidarogrammetry. Our mission is to measure the earth in order to safeguard it.

KGI is a company that embraces the philosophy of sustainable development, training local staff of all levels in the science of photogrammetry.

KGI director David Mac Cartney has managed some of the world's largest aerial photogrammetry projects for clients such as Microsoft and Google.

Today, KGI benefits from over 28 years of experience and can cater for production projects of all sizes and all over the world.

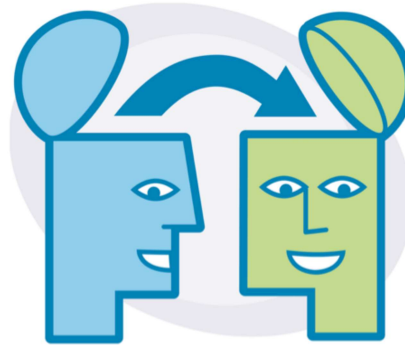


## Professional Team

A Cambodian company



with International specialists



and a local well trained team





## Professional Team

JEB is our local partner

**JEB** SURVEYS &  
ENGINEERING

---

**CIVIL ENGINEERING CONSULTANT**

[jeb-engineers.com](http://jeb-engineers.com)

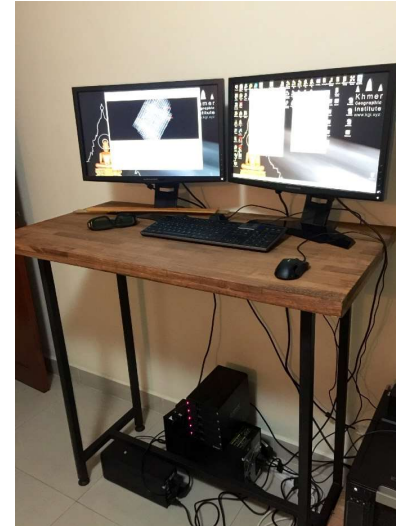
077 990 138

## Professional Team



**Photo and LiDAR**

- DJI M300
- Genius LiDAR
- P1 photo



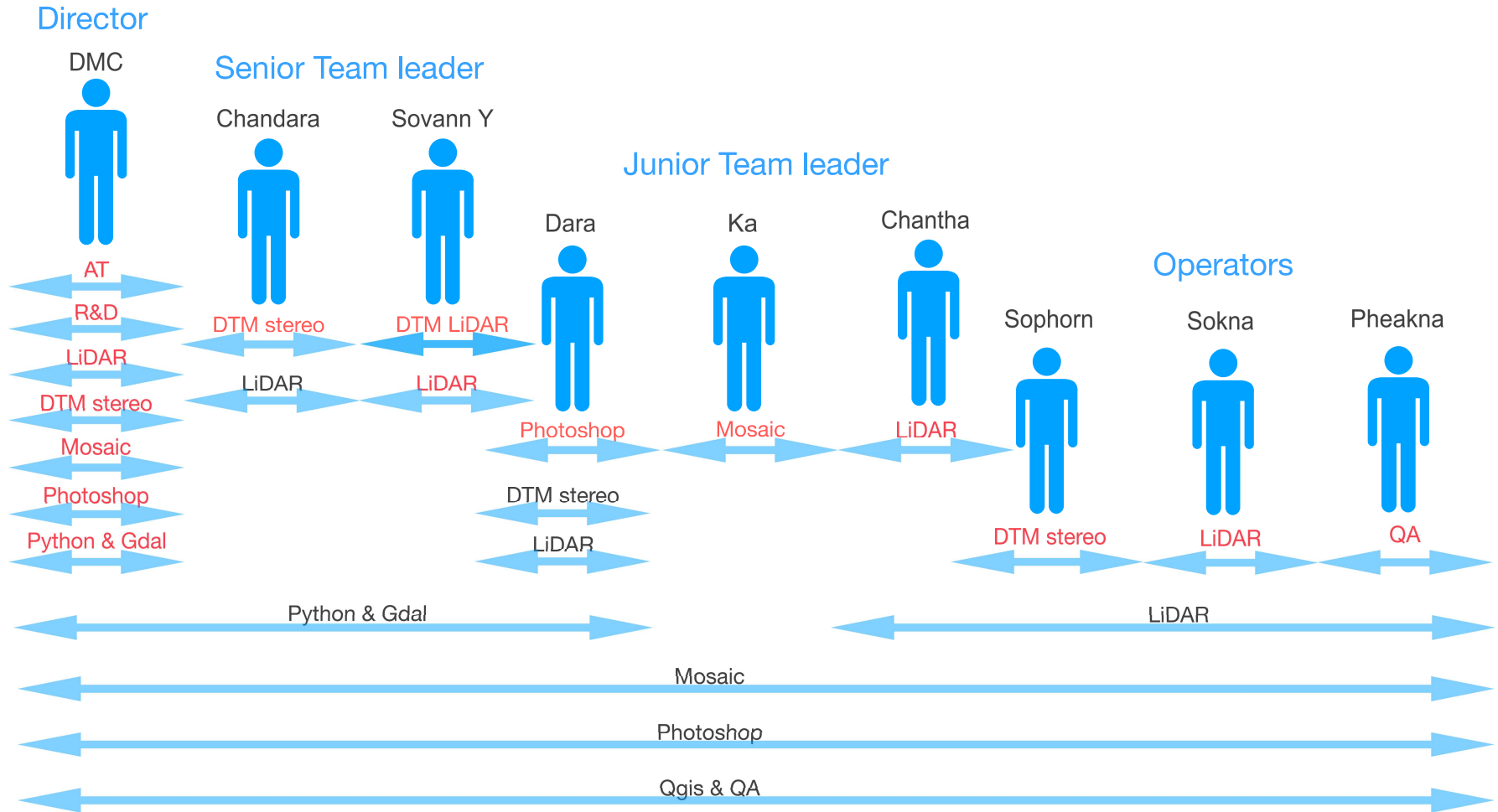
**Processing**

- 3D Photogrammetric workstation
- Inpho photogrammetry suite
- MetaShape automatically 3D reconstruction



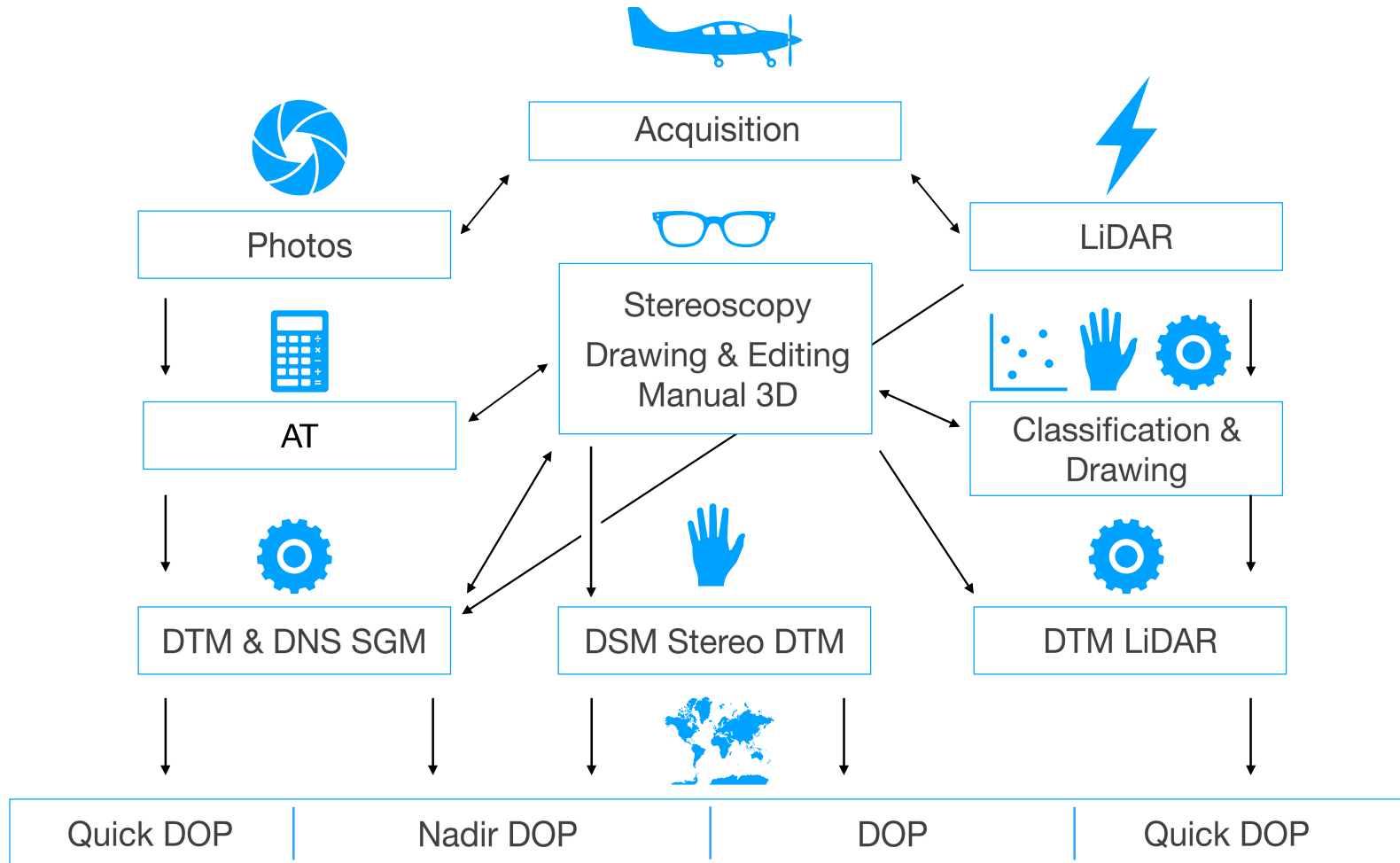
# Professional Team

red = expert





## Professional Team





## Professional Team



3 x calculators CPU et GPU



3 x stereoscopic stations



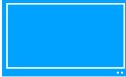
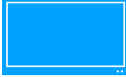
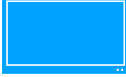



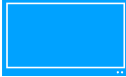



6 x operator stations



200 TB Thunderbolt 3 RAID 5 Storage



## Professional Team

-  1 x Match-AT - **AT**
-  1 x Match-3DX - **SGM DOP**
-  3 x DTMaster - stereoplotter - **DOP & LiDAR**
-  2 x Orthomaster - **DOP (digital ortho photos)**
-  3 x ORTHO Vista - **Radiometry, Mosaic lines and Tiling**
-  1 x MetaShape - **AT - DEM - DOP**
-  1 x LASTools, 1 x Strip Alignment (Baysmap) - **LiDAR**
-  1 x POSPac Applanix + StarSolve for Genius - **LiDAR**
-  Python (deep learning), Xojo, Gdal, Qgis
-  Photoshop, Affinity photo



## Professional Team

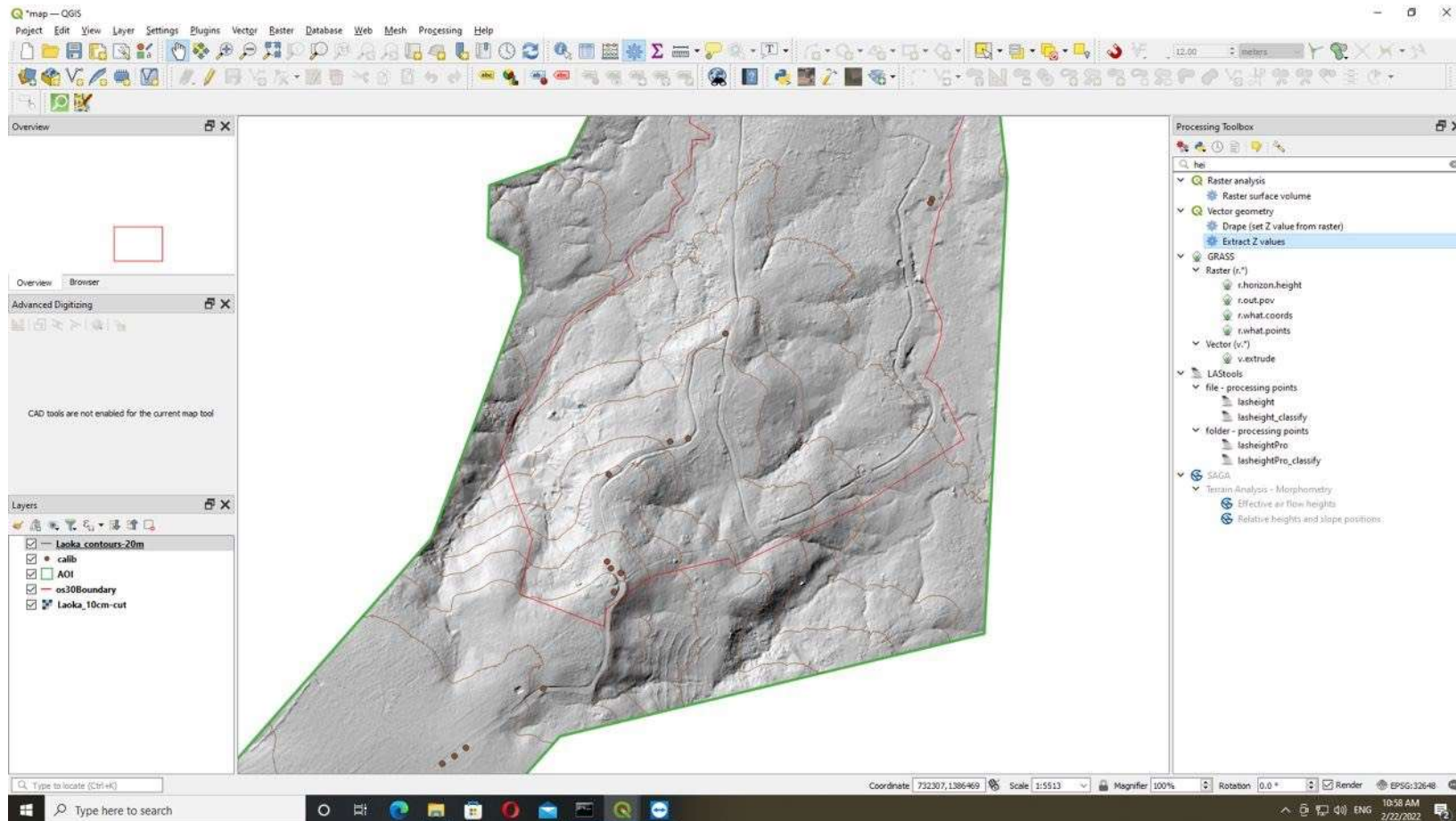
David Mac Cartney

1996	Distributor of Cities Revealed technology, on-shelf orthophoto of Paris with viewer
1997	Co-founder of InterAtlas
1998	France's largest GSD 25cm orthophoto project covering more than 4,500 km <sup>2</sup> in the Paris region
2000	1,200 km <sup>2</sup> of GSD 12.5 cm orthophotos in the Lyon urban area - 2,400 km <sup>2</sup> in the Paris region
2001	IGN's first co-production contract with a private player, 4,000 km <sup>2</sup> around Paris GSD 50cm
2002	3,000 km <sup>2</sup> GSD 12.5cm in the Paris region - 800 km <sup>2</sup> Saint-Etienne, and 300 km <sup>2</sup> Nancy GSD 20cm
2003	First digital flight in France with Intergraph camera - DMC - Ziimaging
2003	Paris and Cergy Pontoise at 12.5 cm and Reims at 16 cm
2004	5,000 km <sup>2</sup> with Vexcel UltraCam D digital camera - Marseille, Aix, Lyon, Orléans GSD 20cm
2005	7 000 Km <sup>2</sup> en région parisienne GSD 12,5cm UltraCam D + LiDAR Optech 31000
2006	Purchase of France's first digital camera UltraCAM D and aircraft manufacturers Cophaiipa and Sphair
	Microsoft, Google, Page Jaune, CBRE... Coverage France urban GSD 6,25cm and departmental 20 cm
2007 - 2014	Urban : 30 000 km <sup>2</sup>
	Rural : 300,000 km <sup>2</sup>
	33 properties in the Paris region acquired in 3D - oblique system developed in-house innovative company OSEO Anvar
	DMC was in charge of production and R&D and processed over 1 million photos during this period.
2014	Founder and director of KGI, which will become a subsidiary of the ATGT Group in 2021
	Offshore photogrammetry production center and photo and LiDAR facility

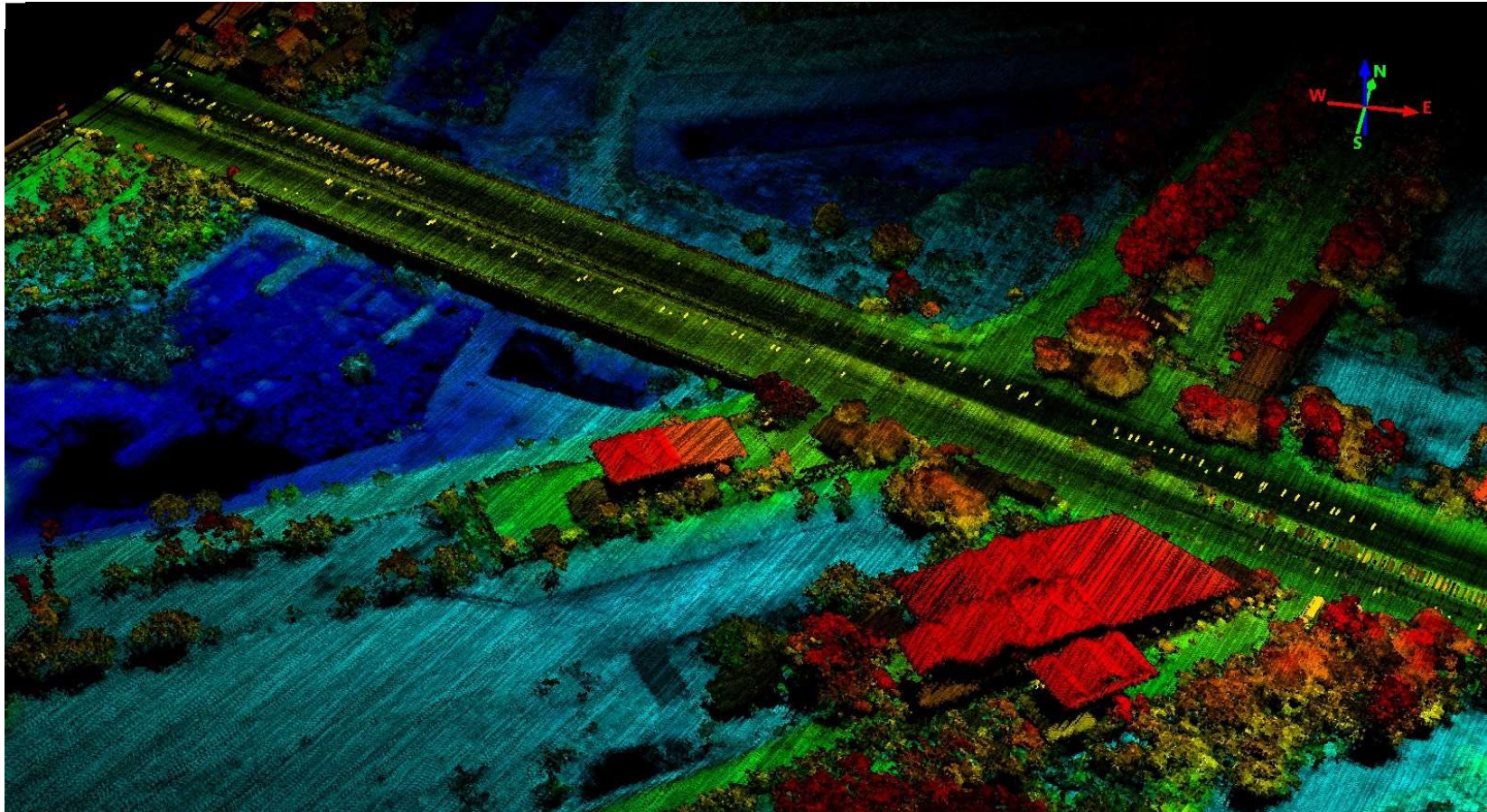
## Digital Ortho Photos



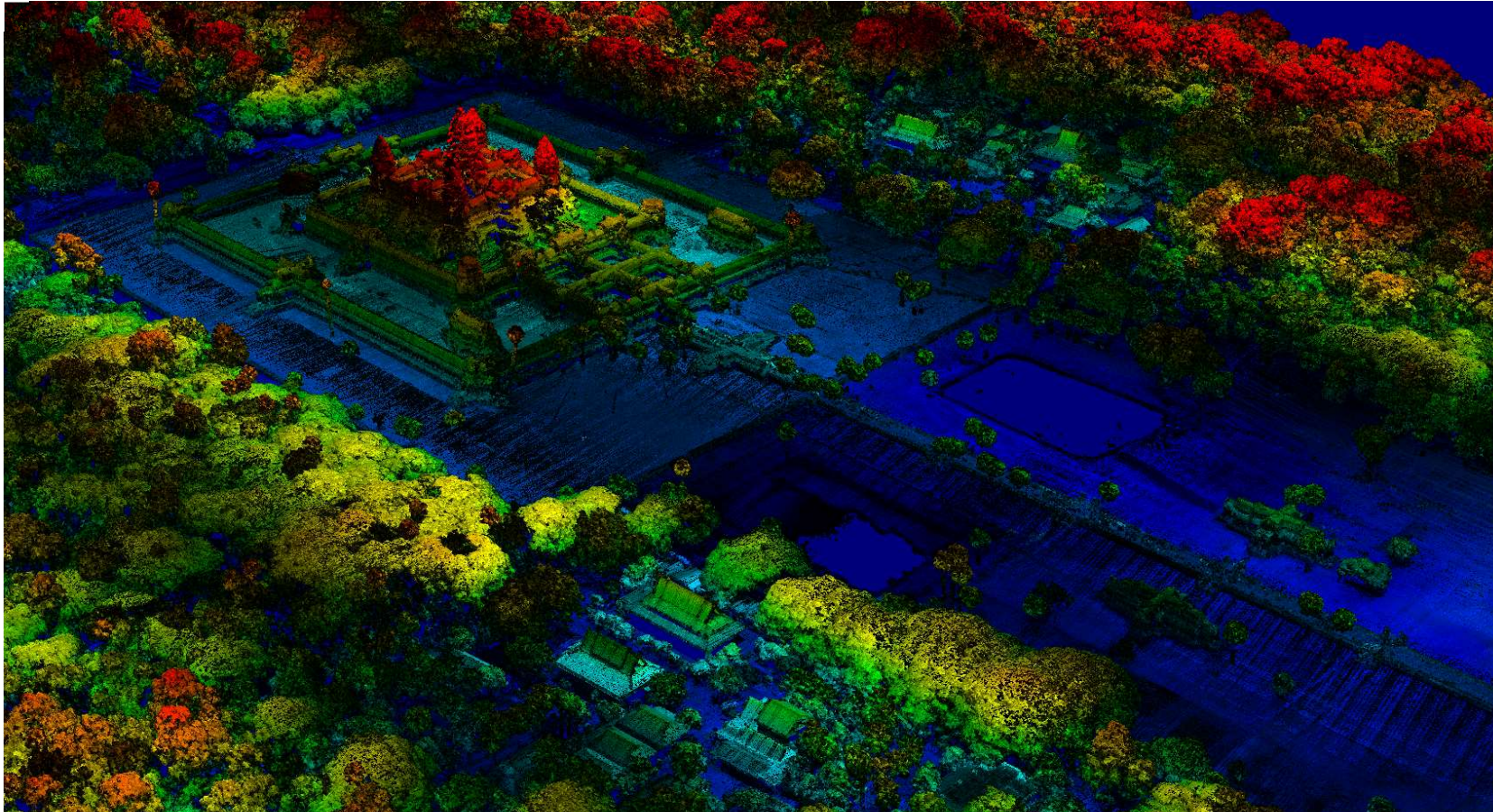
# Digital Terrain Model



## LiDAR filtering & classification

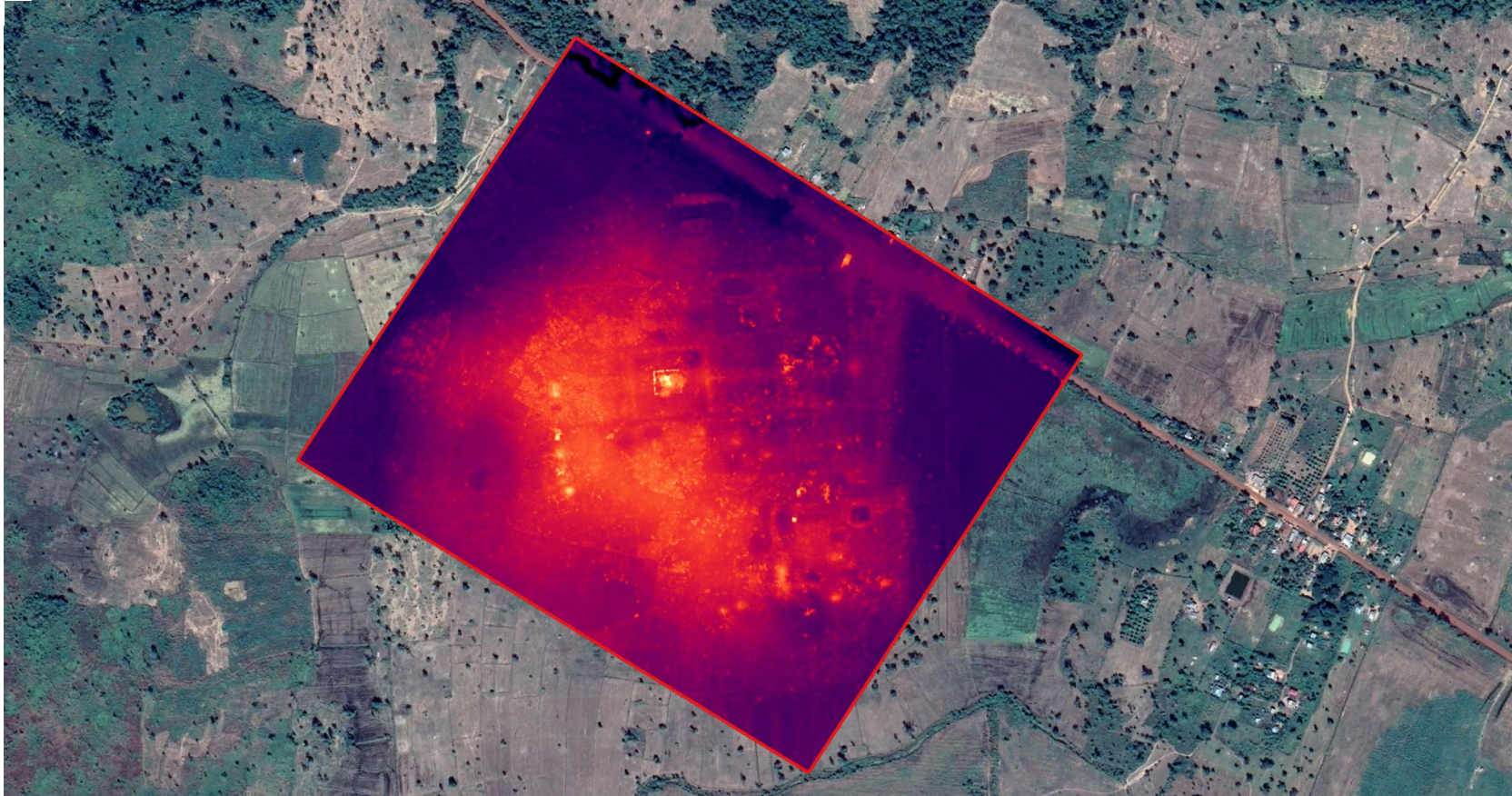


## LiDAR filtering & classification





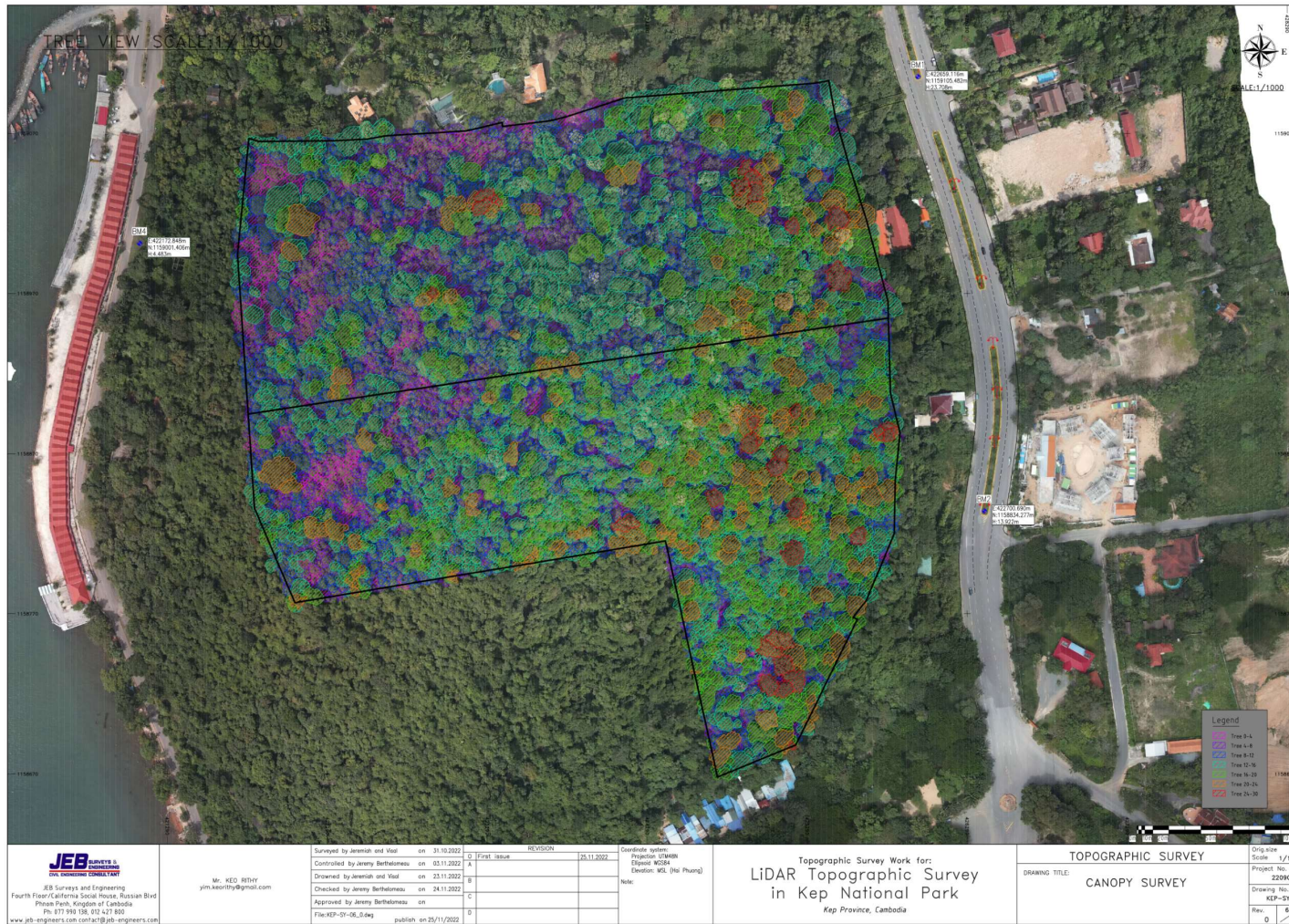
## LiDAR filtering & classification



## Digital Surface Model

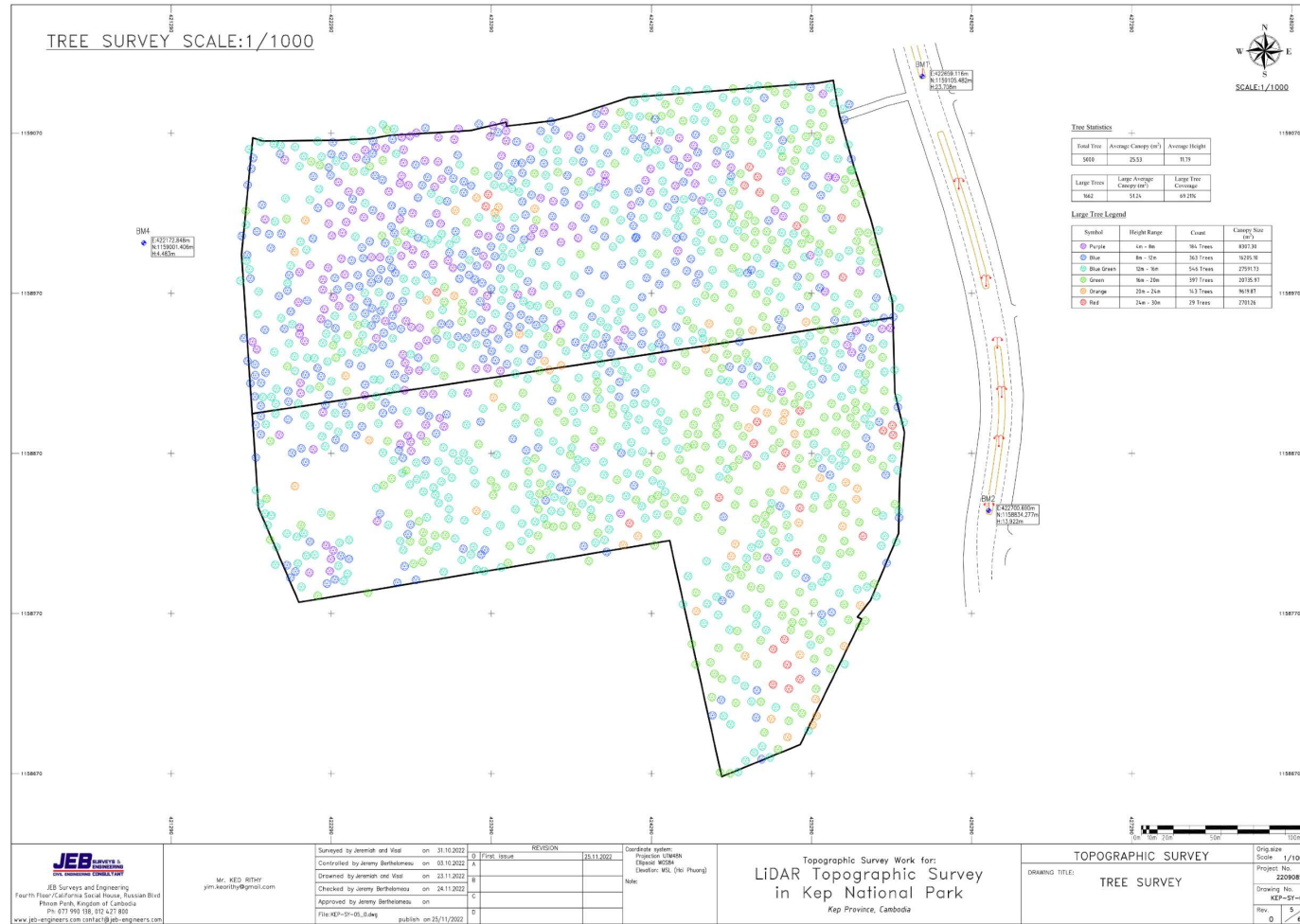


# Image classification

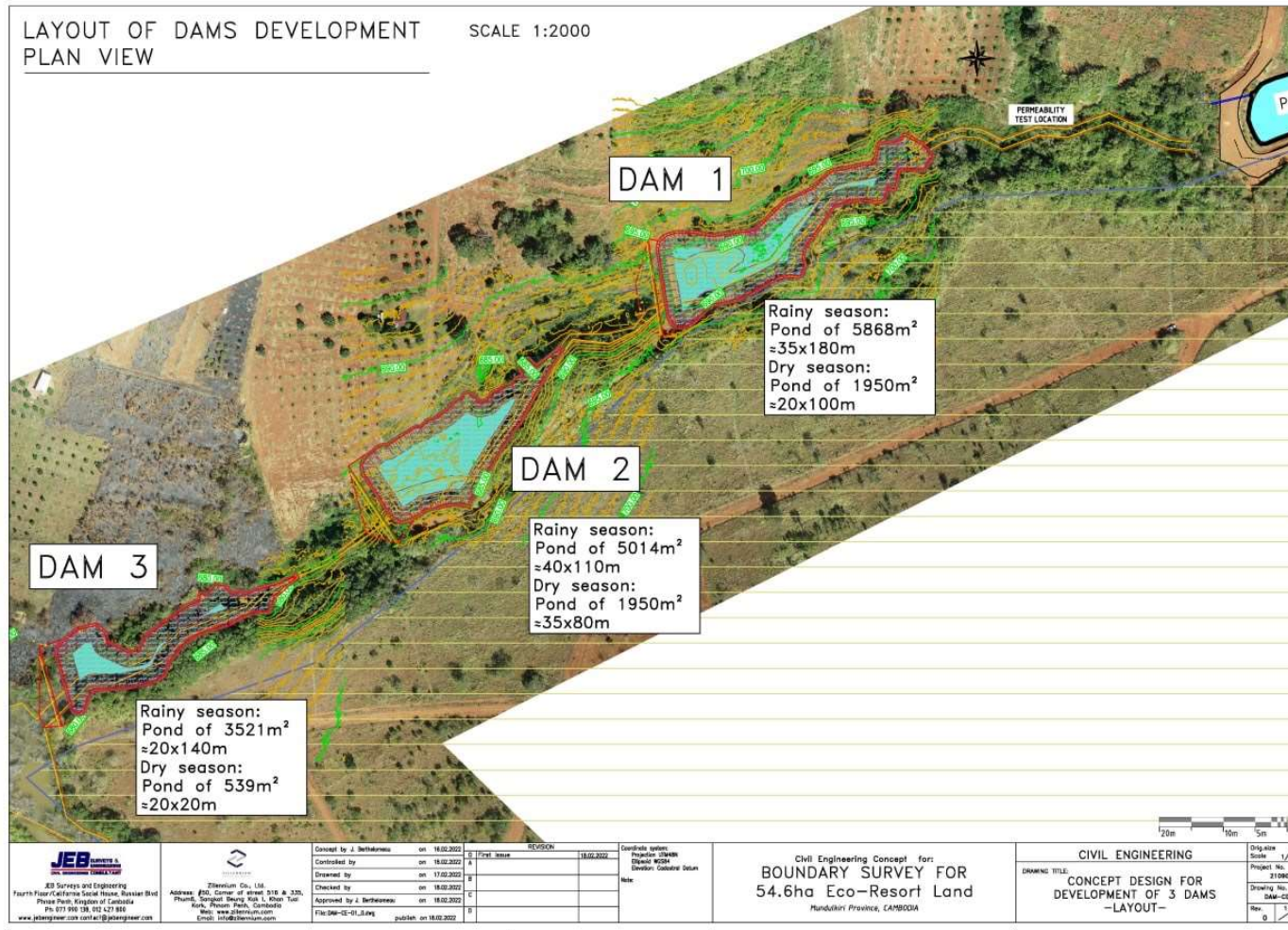




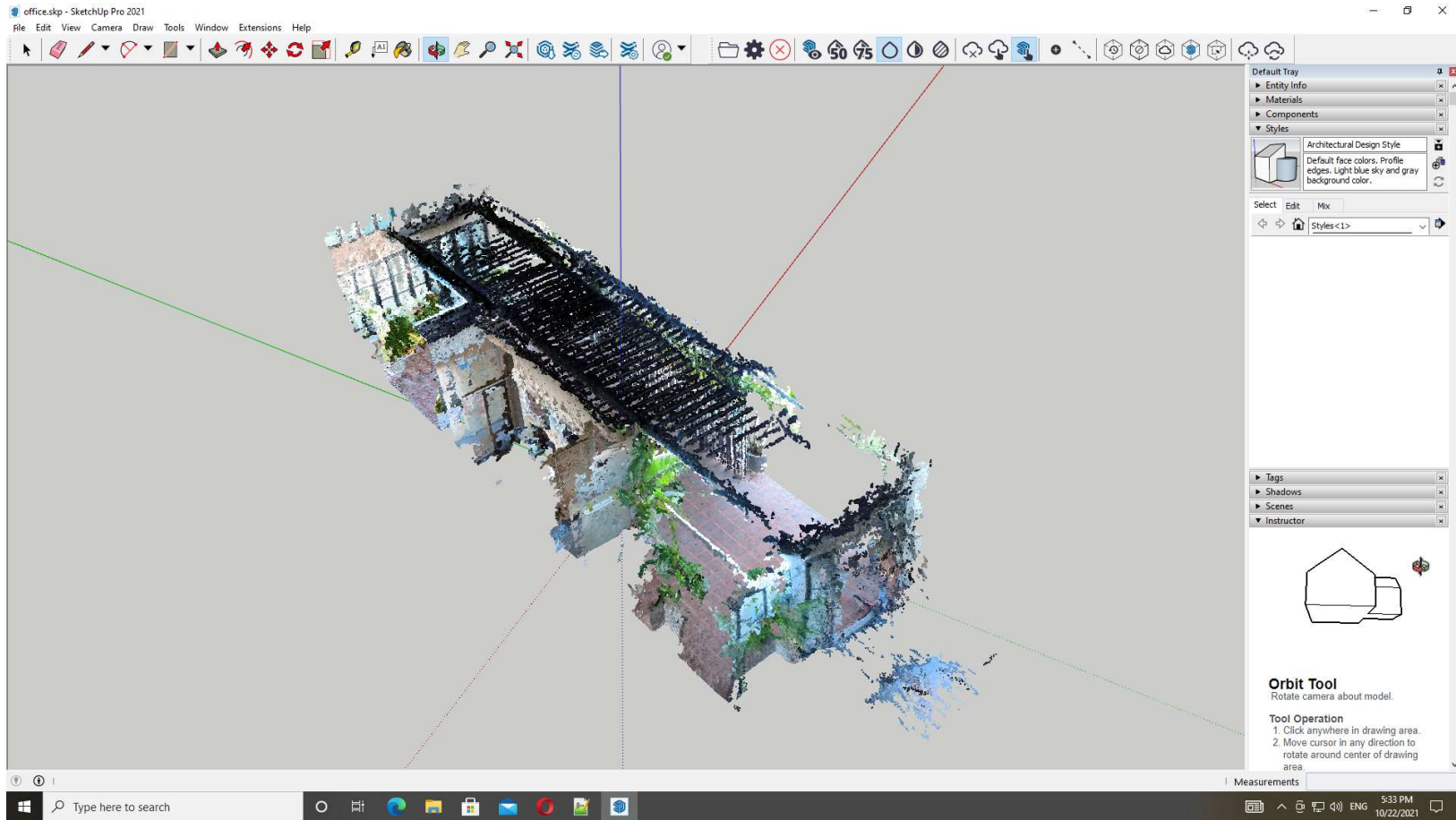
# Mapping courtesy JEB Engineering



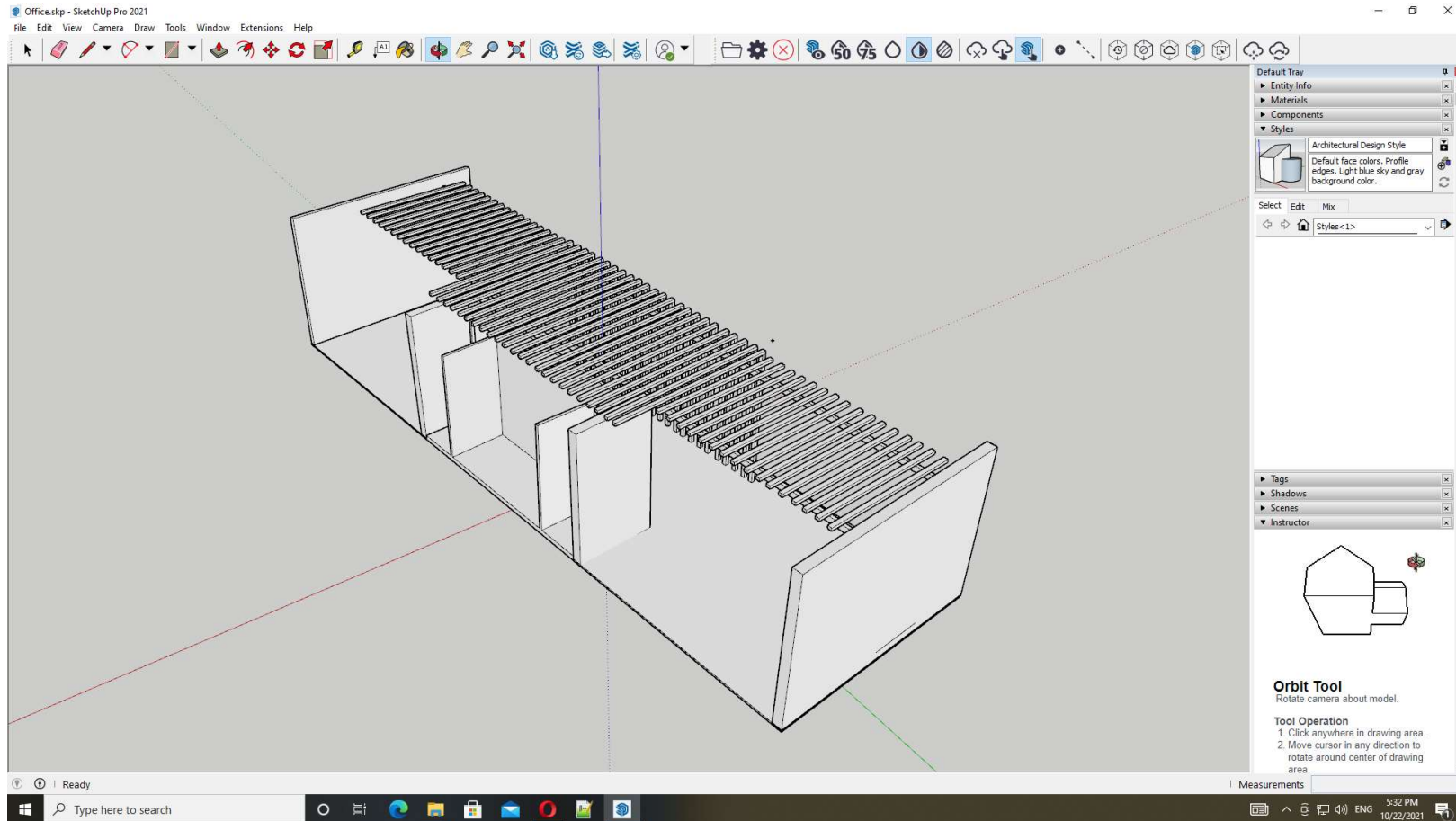
Mapping
  
courtesy JEB Engineering



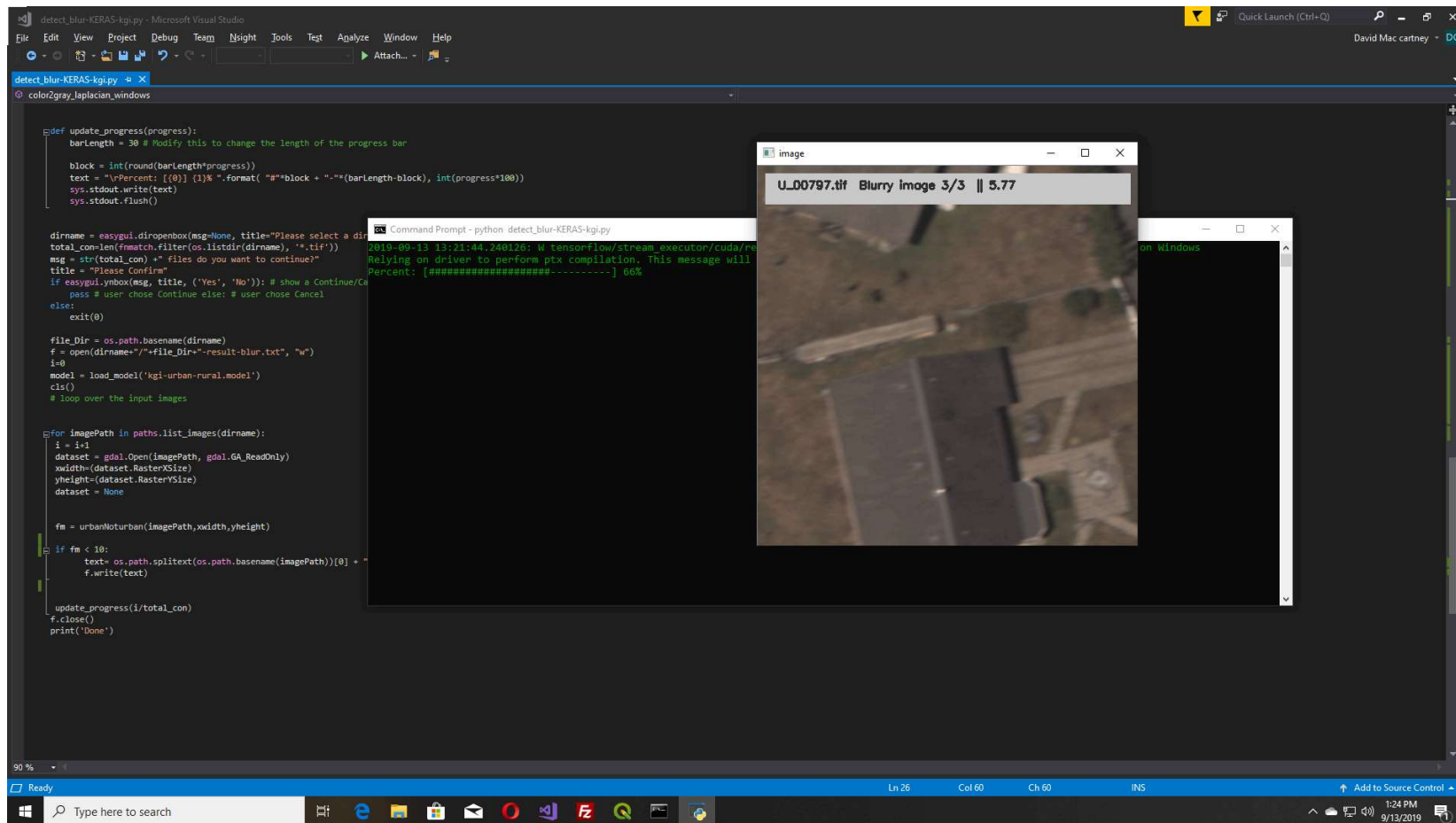
# Photos to Cloud



# Cloud to BIM - 3D



# Deep learning





# MetaShape



## Agisoft Metashape

This is the latest released version.  
Check Metashape [Tutorials](#) and [User Manual](#) to get started.

### Professional Edition

[Windows](#)

[macOS](#)

[Linux](#)

### Standard Edition

[Windows](#)

[macOS](#)

[Linux](#)

**Note:** Updates to Metashape 2.x are free of charge. To update from Metashape Professional 1.x to Metashape Professional 2.x, you will need to re-enter your license code on launching Metashape 2.x, since Metashape 2.x comes with new license activation system developed by Agisoft. Activation system in Metashape Standard edition remains the same. No need to re-enter license code when updating Metashape Standard edition to version 2.x.

**Floating licenses:** Metashape Professional 2.x floating licenses are not compatible with the RLM license server used in earlier versions of the program. To use floating licenses with Metashape Professional 2.x please install a new [Agisoft License Server](#) and use your license code to activate floating licenses.



**Khmer Geographic Institute Co., Ltd.**

N°104A rue 13BT,  
Sangkhat Boeng Tumpun 1  
Phum Sansam Kosal 5  
Khan Mean chey  
120601, Phnom Penh  
Kingdom of Cambodia.

**[www.kgi.xyz](http://www.kgi.xyz)**

**012 917 500**